



...dedicated to the  
promotion, composition,  
performance, understanding  
and dissemination of  
new and contemporary  
music...

NEWSLETTER CONTENTS

XLVI: 4, July-August 2016

**Articles**

SCI/ASCAP  
Student Commission  
Competition by  
Mark Phillips

**Page 1**

**Submit**

Contact information  
to submit news,  
photos, articles and  
more for upcoming  
issues.

**Page 2**

**Resources**

Learn about the  
Newsletter,  
upcoming SCI  
Events and our many  
online resources.

**Page 2**

**Events**

Upcoming student,  
regional and national  
conferences of the  
Society.

**Page 2**

**About**

Membership info,  
members of the  
National Council/  
Executive  
Committee.

**Page 3**

**Join SCI**

SCI is an  
organization for  
composers.  
Various  
membership  
categories are  
available.

**Page 3**

**SCI/ASCAP Student Commission Competition**

**By Mark Phillips**

This year, the SCI/ASCAP Student Commission Competition had 252 submissions (91 undergraduate + 161 graduate), which is almost certainly a new record for this competition. Here are the commission winners for the 2016 SCI/ASCAP Student Composition Contest, along with a few well-deserved honorable mentions in each category.

**Undergraduate Competition Commission Winner:**

Alex Berko (*Aftershock*)

Honorable mentions in undergraduate competition (in alphabetical order):

Ryan Lindveit (*Spinning Yarns*)

Frej Wedlund (*Half-light on Desolation*)

Guang Yang (*Immortelle*).

**Graduate Competition Commission Winners:** (alphabetical order):

Thomas Kotcheff (*bang Z*)

Michael Seltenreich (*Sparks and Flares*)

Honorable mentions in graduate competition (in alphabetical order):

Andrew Babcock (*Ventriloquy*)

Jay Hurst (*Still Lives for orchestra*)

Charles Peck (*Rift & Shade*).



Alex Berko



### About the Newsletter

**Editor:** Michael Rene Torres  
**Assistant Editors:** Carter John Rice & Brad Decker

**Access:** available on the SCI website at <http://www.societyofcomposers.org/publications/newsletter/>

**Newsletter Contact Information:** [newsletter@societyofcomposers.org](mailto:newsletter@societyofcomposers.org)

The SCI Newsletter is a bi-monthly publication which serves the SCI membership by publishing materials pertaining to the field of composition and contemporary music culture including: history, pedagogy, philosophy, opinion, current events, interdisciplinary connections, etc. Specifically, the types of articles published are blog or academic style articles, interviews, album reviews, concert/conference reviews, etc. The views and opinions expressed in articles published by the SCI Newsletter are those of the authors and do not necessarily reflect the official policy or position of the Society of Composers, Inc.

**For other SCI business:**  
 Society of Composers, Inc.  
 P.O. Box 687  
 Mineral Wells, TX  
 76067-0687  
[secretary@societyofcomposers.org](mailto:secretary@societyofcomposers.org)

Copyright © 2016  
 Society of Composers, Inc.  
 All rights reserved.



### Upcoming SCI Events

**2016 SCI Student National Conference**  
**November 17-19, 2016**  
 Ball State University  
 Carter Rice, Co-host  
 Chad Powers, Co-host

**2017 Region IV Student Conference**  
**January, 26-27, 2017**  
 University of North Carolina Greensboro  
 Elise Seifert, Host

**2017 Region VI Conference**  
**February 2-4, 2017**  
 The University of Texas at Arlington  
 Dan Cavanagh, Host

**2017 SCI Region VIII Conference**  
**March 1-14, 2017**  
 Washington State University  
 Ryan M. Hare, Host

**2017 SCI National Conference**  
**March 30-April 1, 2017**  
 Western Michigan University  
 Christopher Biggs, Co-host  
 Lisa Coons, Co-host  
 Richard Johnson, Co-host

**2017 Region VII Conference**  
**September 29-30, 2017**  
 Arizona State University  
 Jody Rockmaker, Host



### Internet & Email

[www.societyofcomposers.org](http://www.societyofcomposers.org)

- Conference dates and submission guidelines
- Contact information and links to member web-pages
- Student chapters and opportunities
- CDs and journals produced by SCI
- Details on SCI such as membership, contacts for officers, regional structure, by-laws, newsletter archives and more...

### SCION

SCION is a listing of opportunities on our website exclusively for members. It is updated on a continual basis so that it may be checked at any time for the most current notices. In addition, members are emailed on the first Monday of each month to remind them to visit the site for new or recent postings. The large number of listings is easily managed by a table of contents with links to the individual notices. In-depth coverage; contest listings in full; all items listed until expiration; this is a valuable resource that you may print in its entirety or in part at any time.

**John Bilotta, SCION Editor**  
[scion@societyofcomposers.org](mailto:scion@societyofcomposers.org)

### scimembers

**scimembers** is a member-driven e-mail mailing list that is intended to facilitate communication between members of the Society on topics of concern to composers of contemporary concert music. It conveys whatever notices or messages are sent by its members, including announcements of performances and professional opportunities, as well as discussions on a wide variety of topics. For more information, including how to join and participate in the listserv:

<http://www.societyofcomposers.org/publications/listserv.html>

## National Council

### President

James Paul Sain  
University of Florida

### Region 1

Scott Brickman  
University of Maine at Fort Kent

Beth Wiemann  
University of Maine

### Region 2

Neil Flory  
Jamestown Community College

### Region 3

Harvey Stokes  
Hampton University  
Christopher Cook  
Christopher Newport University

### Region 4

Martín Gendelman  
Georgia Southern University  
Thomas Couvillon  
Eastern Kentucky University

### Region 5

Christopher Biggs  
Western Michigan University  
Frank Felice  
Butler University

### Region 6

Dan Cavanagh  
University of Texas at Arlington  
Craig Weston  
Kansas State University

### Region 7

Jody Rockmaker  
Arizona State University  
Glenn Hackbarth  
Arizona State University

### Region 8

Rob Hutchinson  
University of Puget Sound  
Patrick Williams  
University of Montana

### President Emeritus

Greg Steinke

## Membership Information

*For complete details, please visit*  
<http://www.societyofcomposers.org/join/membership.html>

**Full Membership** (\$75/year): Eligible to submit scores to the National Conferences, regional conferences, SCI Recording Series, SCI Journal of Music Scores. Access to the SCI Newsletter in electronic form. Optional subscription to [scimembers], the SCI listserv and all other SCI publications. Eligible to vote on Society Matters and in elections for the National Council.

**Joint Membership** (\$100/year): Same benefits as full members

**Senior Membership** (\$35/year): Open to those 65 years of age or older, or retired. Same benefits as full members.

**Associate Membership** (\$40/year): Open to performers and other interested professionals. Receives the SCI Newsletter in electronic form and can participate in national and regional conferences.

**Student Membership** (\$35/year): Eligible to submit to national and regional conferences and to vote in society matters. Access to all SCI publications.

**Student Chapter Membership** (\$25/year): Same benefits as student members, but only available on campuses having Student Chapters.

**Institutional Membership** (\$40/year): Organizations receive hard copy of the SCI Newsletter and other mailings.

**Lifetime Membership** (\$1400 or \$150/year for 10 years): Benefits the same as full members, for life.

## Executive Committee

### Chairman

Mike McFerron  
Lewis University

**Newsletter Editor**  
Michael Rene Torres  
Ohio State University

**SCION Editor**  
John G. Bilotta

**Journal of Music Scores Editor**  
Bruce J. Taub

**CD Series Editor**  
Travis Garrison  
University of Nebraska at Omaha

**Submissions Coordinator**  
Anne Neikirk  
University of Delaware

**SCI/ASCAP Commission  
Competition Coordinator**  
Mark Phillips  
Ohio University

**Student Chapters Coordinator**  
Natalie Williams

**Student Events Coordinator**  
Adam Vidiksis  
Temple University

**Marketing Coordinator**  
Jamie Sampson

**Associate Marketing Coordinator**  
Andrew Martin Smith

**Webmaster**  
David Drexler

**System Administrator**  
Matthew McCabe  
University of Florida

**System Analyst**  
M. Anthony Reimer

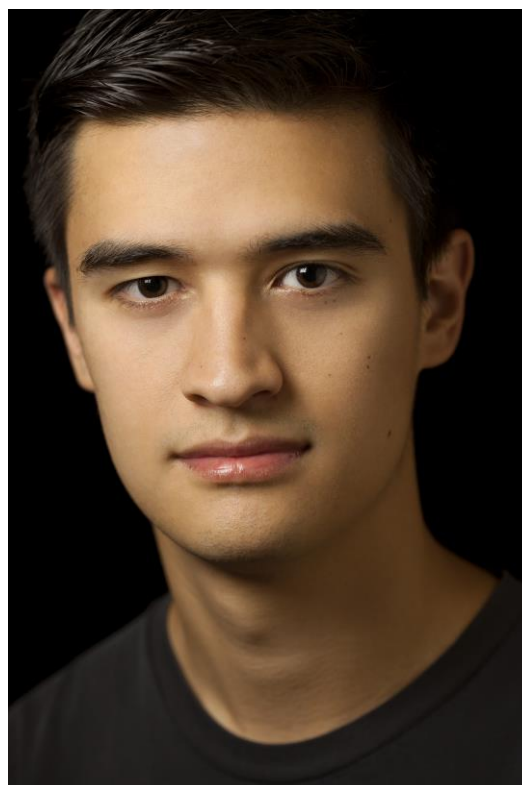
**Student Representative**  
Carter John Rice

**Member Statistics Coordinator**  
Jessica Rudman  
Hartt School Community Devision  
SCI National Office General Manager  
Gerald Warfield



Looking at the numbers in the opening sentence of this article, it should be clear that the success of this enterprise was dependent on an enormous amount of work behind the scenes. Our partners at ASCAP not only contribute prize money, but lend their design expertise for creating contest posters and flyers for our General Manager, Gerald Warfield, to send out in the mail. Our publicity and marketing team, Andrew Martin Smith and Jamie Leigh Sampson, did a terrific job of spreading the word about the competition far and wide. Mike McFerron and Tony Reimer worked behind the scenes tweaking the MusicAvatar submission engine to ensure a smooth and satisfying experience for both students and adjudicators as it handled this competition for the first time.

Of course it would be difficult, if not impossible, for SCI to be able to offer this opportunity to our student members without the incredibly generous donation of time, energy, and expertise by an outstanding panel of over three dozen adjudicators, recruited from the SCI membership. Our heartfelt thanks is due to all judges on the list below. If you happen to know any of them, please take time to thank them in person next time you see them.



*Thomas Kotcheff - Photo by Jeremy Jackson*

**Adjudicators:**

Arthur Gottschalk, Mark Snyder, Ingrid Stolzel, Lonnie Hevia, Sarah Danielle Hutchings, Rami Levin, Robert McClure, Helena Michelson, Kirsten Volness, John Orfe, Jay C Batzner, Daniel Eichenbaum, Cynthia Folio, Kenneth Froelich, Orlando Garcia, Texu Kim, Timothy Kramer, Carleton Macy, Lansing McLoskey, Alejandro Rutty, Harvey Stokes, Roger Briggs, Kyong-Mee Choi, Christopher Dietz, Douglas Geers, Glenn Hackbarth, Barbara Harbach, Jennifer Jolley, Kari Henrik Juusela, Jody Rockmaker, Suzanne Sorkin, David Carpenter, Paul Hayden Ed Martin, John Mayrose, Ryan Olivier, Dan VanHassel

Finally I want to congratulate the students who participated in this contest. I lost track of the number of comments I received from the adjudicators concerning the impressive strength of the submissions in both categories. In the words of one judge:

This competition more than any other before has made me appreciate form letter responses that begin along the lines of 'The level of excellence among this year's pool of entries was uncommonly strong...'



*Michael Seltenreich - Photo by Dennis J. Christians*